



**MASON COUNTY EMS AND
TRAUMA COUNCIL
P.O. BOX 645
SHELTON, WASHINGTON 98584**



**COUNTY WIDE OPERATING PROCEDURE
DESTINATION POLICY FOR CARDIOVASCULAR PATIENTS**

PURPOSE: *To designate destination hospitals for patients with cardiovascular emergencies, specifically stroke and myocardial infarction, and maximize the best possible outcomes.*

POLICY: All patients with the assessment of stroke /CVA and or myocardial infarction will be transported to a designated hospital.

PROCEDURE:

A. STROKE

1. It is required for a patient who has had the onset of stroke symptoms within the last 3 ½ hours to be included under this policy.
2. Calls to base station and/or the receiving hospital should declare this patient as a “Stroke Activation”.
3. Designated Hospitals:
 - a. Patients in the North Hwy 3 Corridor(North of Allyn)- Harrison Medical Center
 - b. Highway 101 Corridor or Central County – Mason General Hospital
 - c. South County (South of Lynch Road) - St. Peter's.

B. MYOCARDIAL INFARCTION

1. It is required for a patient with signs and symptoms of a myocardial infarction AND a POSITIVE 12 Lead ECG to be included under this policy.
2. Calls to base station and/or the receiving hospital should declare this patient as a “STEMI Activation”.
3. Designated Hospitals:
 - a. Patients in the North Hwy 3 Corridor(North of Allyn)- Harrison Medical Center
 - b. Highway 101 Corridor, Central & South County (South of Lynch Road) – St. Peter’s

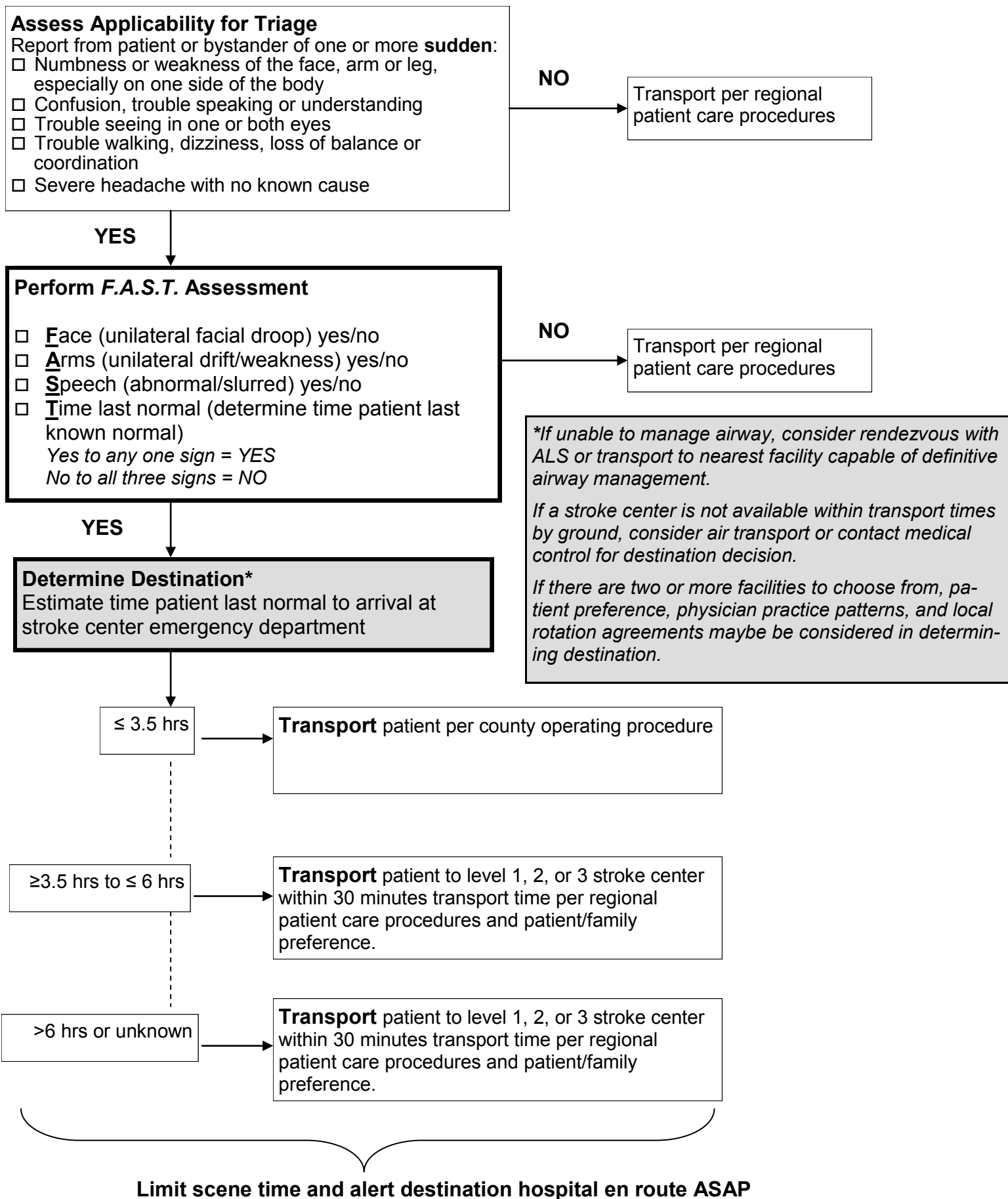
Signed: _____
Joseph Hoffman, M.D., M.P.D.

Date: _____
Updated: _____

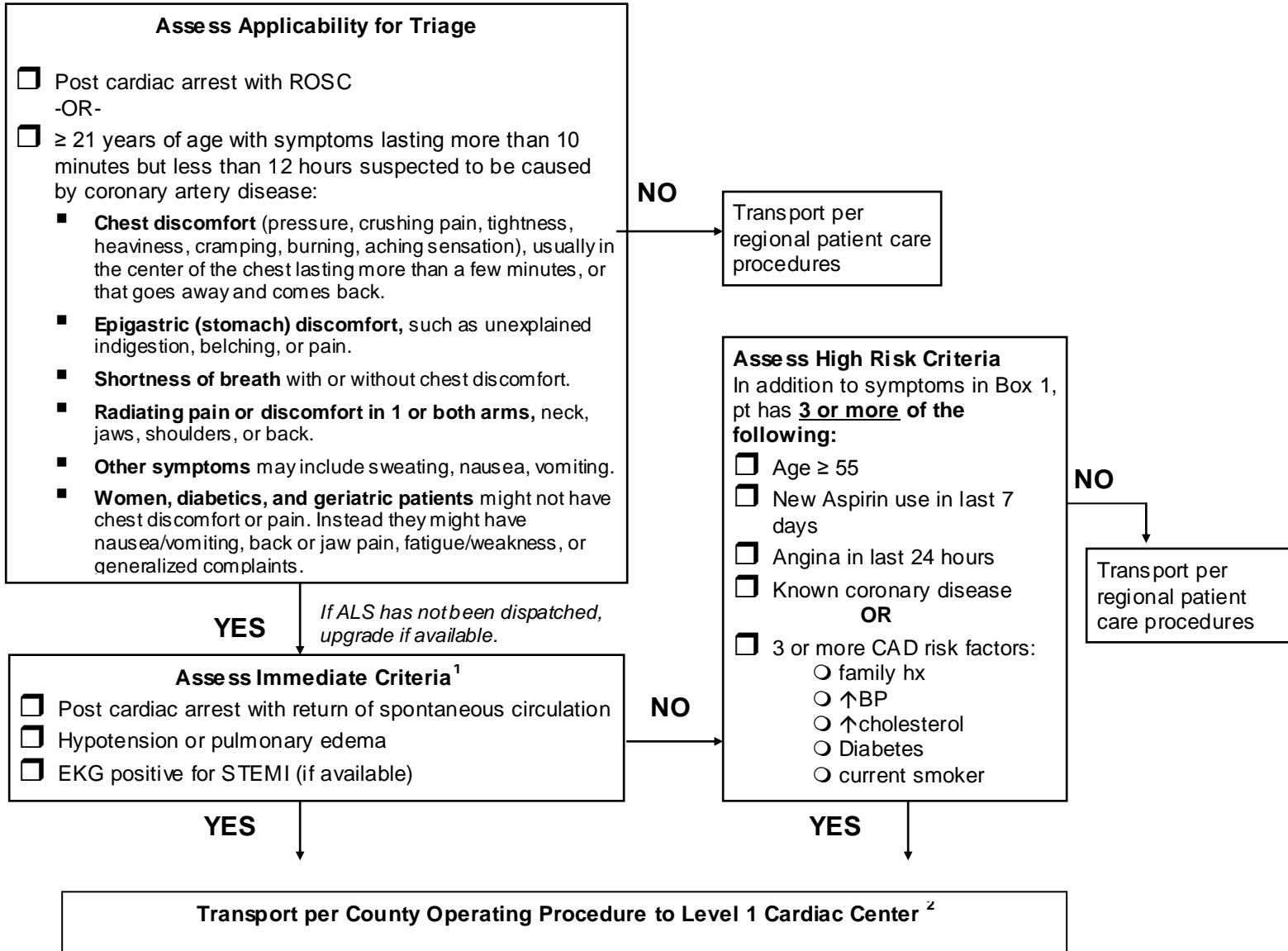
Council Chair

Council Secretary

Mason County Prehospital Stroke Triage Destination Procedure



Mason County Prehospital Cardiac Triage Destination Procedure



¹ Unstable patients with severe respiratory distress, hypotension, or recurrent life-threatening arrhythmias should be transported to the closest Level 1 or 2 Cardiac Hospital.

² Consider air transport for all transports greater than 60 minutes.

³ Patients who do not meet Level 1 criteria, should be transported to a Level 2 Cardiac Center.